

29 January 2026

# Media Release

---

## **GDM – Delivers Strong Performance in Dec. Qtr.**

Great Divide Mining Ltd (ASX:GDM) has delivered a solid December 2025 quarter, marked by meaningful progress across its entire portfolio of gold and antimony projects and the resolution of an issue at its flagship Challenger Gold Mine.

During the quarter, GDM completed binding documentation to resolve the Challenger joint venture dispute, positioning the Company to move toward 100% ownership of the Challenger Gold Mine, in Adelong, NSW, subject to final approvals. The outcome will simplify ownership, remove uncertainty and provide GDM with full strategic and operational control over one of NSW's most established brownfields gold assets.

Chief Executive Officer Justin Haines said the resolution will represent a pivotal step forward for the Company.

“Securing full ownership of Challenger removes complexity and gives us the flexibility to progress a disciplined, staged restart strategy aligned with our balance sheet and market conditions,” Mr Haines said.

At the Coonambula Antimony-Gold Project in Queensland, joint venture partner Dart Mining continued to deliver standout exploration results. High-grade surface sampling and early drilling at the historic Banshee Antimony Mine returned antimony grades of up to 65.3% Sb, reinforcing Coonambula's potential as a strategically significant antimony project at a time of growing global demand for critical minerals.

GDM also advanced its Yellow Jack Gold Project through a capital-light joint venture structure with Native Mineral Resources, providing a clear pathway toward a second mining operation using existing regional processing infrastructure.

Across the broader portfolio, the Company maintained tight capital discipline while progressing permitting, technical studies and exploration planning to ensure assets are well positioned for calendar 2026 growth.

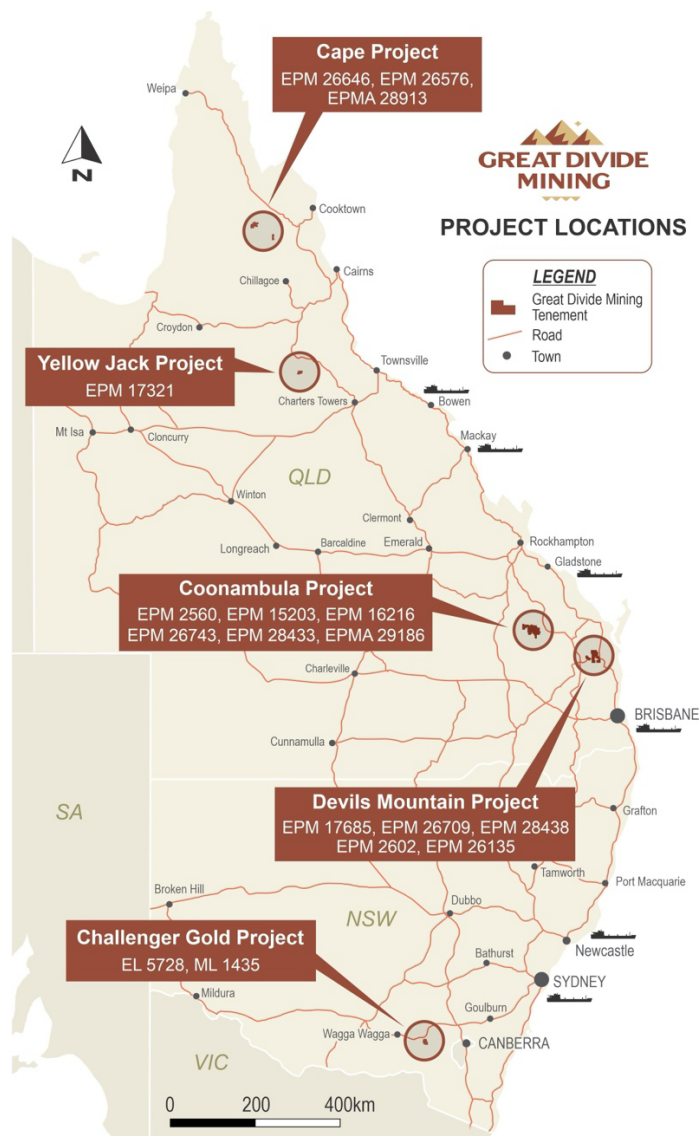
“We've taken GDM from listing to first gold pour in under two years,” said Haines.

“Our share price has never dipped below listing price,” he continued.

“We know what we're good at - advancing historically proven brownfield projects, with existing infrastructure and clear pathways to production,” said Haines.

“This quarter reflects continued execution of that strategy.”

ENDS



*GDM delivers progress across its' entire project portfolio*

For further information:

Justin Haines, CEO

e [justin.haines@greatdividemining.com.au](mailto:justin.haines@greatdividemining.com.au)

m +61 (0)418 876 420

### Great Divide Mining Ltd (ASX: GDM)

Great Divide Mining is an Australian Gold, Antimony and critical metals miner, explorer and developer with five projects across 17 tenements (including two in application). GDM's focus is on operating producing assets within areas of historical mining and past exploration with nearby infrastructure, thus enabling rapid development. Through a staged exploration and development programme, GDM intends to generate cash flow from its initial projects to support further exploration across its portfolio of highly prospective tenements.

<https://greatdividemining.com.au/>