

16 January 2026

Media Release

10.5 g/t Au, 5.14 g/t Sb, 120 g/t Ag @ GDM's Coonambula Project

Great Divide Mining Ltd (ASX:GDM) is pleased to highlight a series of high-grade gold, silver and antimony results returned from recent surface and trench sampling at the Coonambula Antimony-Gold Project in central Queensland, under the Company's farm-in agreement with Dart Mining NL (ASX:DTM).

Recent sampling adjacent to the historic Banshee Mine has confirmed a broad zone of near-surface mineralisation, including 5 metres at 2.55 g/t gold with 1.35% antimony. Within this zone, individual channel samples returned grades of up to 8.92 g/t gold and 5.14% antimony, supporting the potential for bulk near-surface mineralisation.

Importantly, high-grade gold results were also recorded well beyond the Banshee mine area, demonstrating the broader scale of the Coonambula system. Sampling from historic workings at Lady Margaret returned gold grades of up to 7.26 g/t Au, while sampling at McKonkeys North returned values of up to 10.45 g/t Au and 19.4 g/t silver from historic mine dumps.

Additional rock chip samples along strike from Banshee also delivered strong silver values exceeding 120 g/t Ag, alongside elevated gold and antimony, reinforcing the multi-metal nature of the system.

Great Divide Mining CEO Justin Haines said the results provided further confidence in the scale and quality of the Coonambula project:

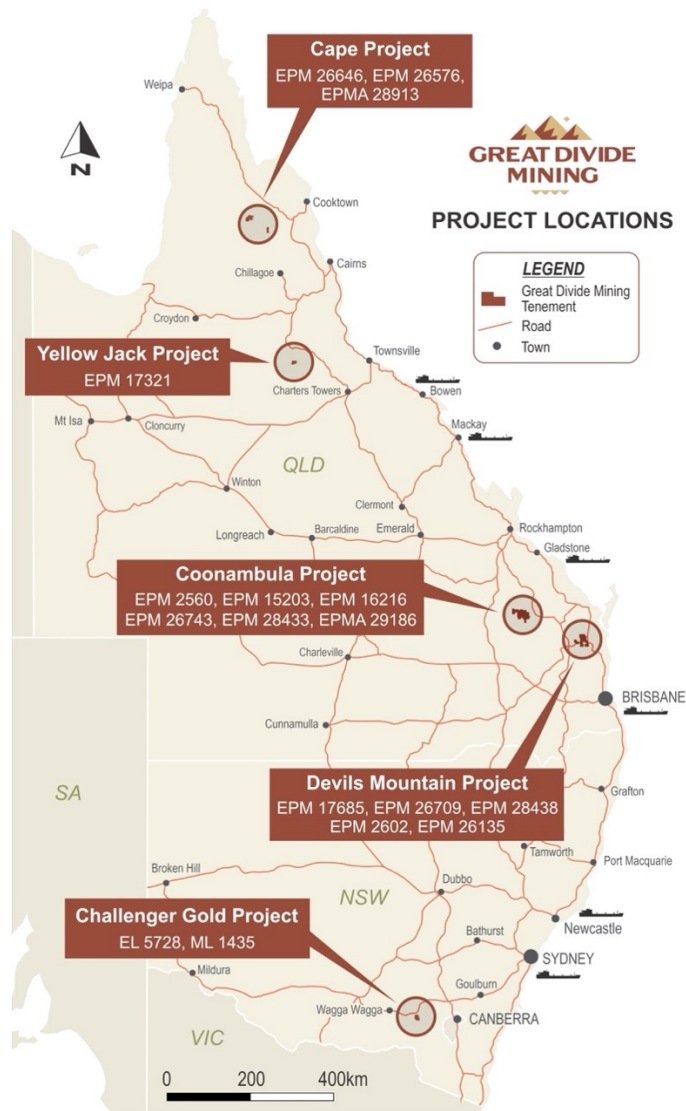
"These surface results continue to demonstrate that Coonambula hosts multiple high-grade gold-antimony zones, not just at Banshee but across a broader corridor of historic workings," he said.

"Seeing this level of gold and silver at surface is encouraging as we move through systematic drilling, geophysics and modelling aimed at defining a meaningful resource."

"The consistency of grades across several prospects supports the potential to define a sizeable mineralised system," Haines continued.

"Ongoing drilling, geophysics and modelling are expected to further refine targets, with the objective of advancing Coonambula toward a maiden resource," said Haines.

ENDS



Coonambula returns consistently high grades across a sizeable mineralised system.

For further information:

Justin Haines, CEO
 e justin.haines@greatdividemining.com.au
 m +61 (0)418 876 420

Great Divide Mining Ltd (ASX: GDM)

Great Divide Mining is an Australian Gold, Antimony and critical metals miner, explorer and developer with five projects across 17 tenements (including two in application). GDM's focus is on operating producing assets within areas of historical mining and past exploration with nearby infrastructure, thus enabling rapid development. Through a staged exploration and development programme, GDM intends to generate cash flow from its initial projects to support further exploration across its portfolio of highly prospective tenements.

<https://greatdividemining.com.au/>